

MONTHLY MEMBERSHIP PROGRESS REPORT

LOCATION IOWA

District 9 NE

Results as of: 9/30/2021

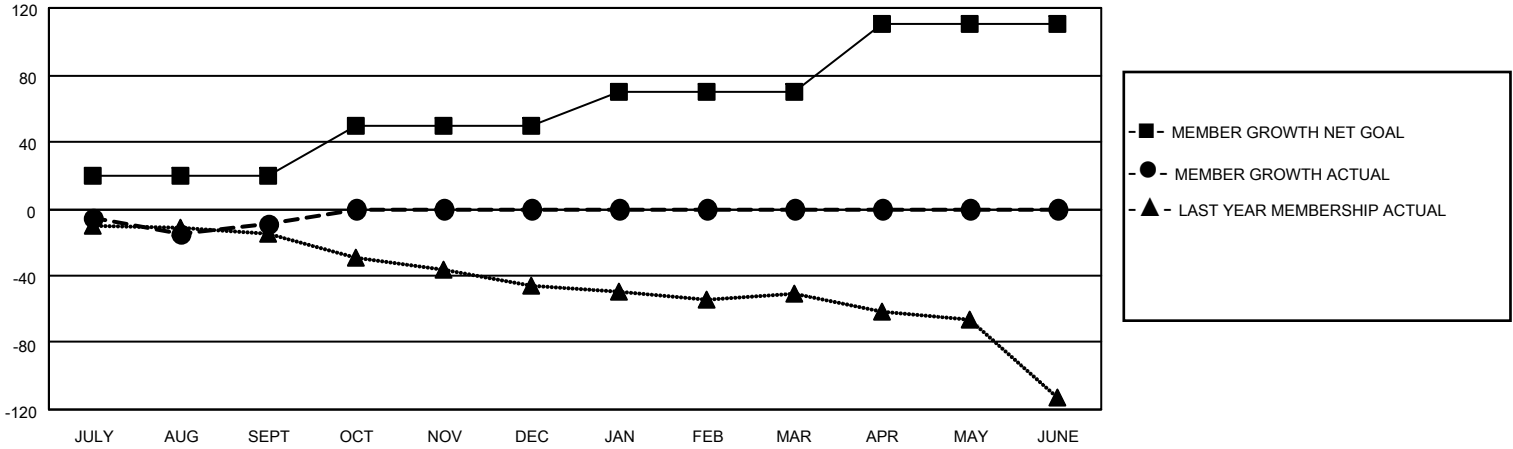
Clubs			
RESULTS FOR 2021-2022			
QUARTER	NEW CLUB GOAL	NEW CLUBS	DROPPED CLUBS
JULY/AUG/SEPT	1	0	3
OCT/NOV/DEC	1	0	0
JAN/FEB/MAR	1	0	0
APR/MAY/JUNE	1	0	0

Members			
RESULTS FOR 2021-2022			
QUARTER	MEMBER GROWTH NET GOAL	MEMBER GROWTH ACTUAL	DROPPED MEMBERS ACTUAL (including transfers)
JULY/AUG/SEPT	20	37	42
OCT/NOV/DEC	30	0	0
JAN/FEB/MAR	20	0	0
APR/MAY/JUNE	40	0	0

GOALS AND ACTUAL NEW CLUBS CUMULATIVE



GOALS AND ACTUAL MEMBERS CUMULATIVE



DROPPED CLUBS: 3

15 CLUBS OF 45 ADDED 1 OR MORE NEW MEMBERS

GENDER DISTRIBUTION

MALE	945 (77.21%)
FEMALE	279 (22.79%)
NON BINARY	0 (0.00%)
PREFER NOT TO ANSWER	0 (0.00%)

DROPPED MEMBERS

DECEASED	7
CLUB CANCELLED	0
OTHER	35
TOTAL	42

[CLICK HERE FOR CUMULATIVE MEMBERSHIP DATA](#)

TOTAL FAMILY UNIT MEMBERS	155
FAMILY MEMBERS PAYING HALF DUES	78